

Project delivery is more complex. ProjectWise is evolving to make it easier for you.

Increasing complexities:



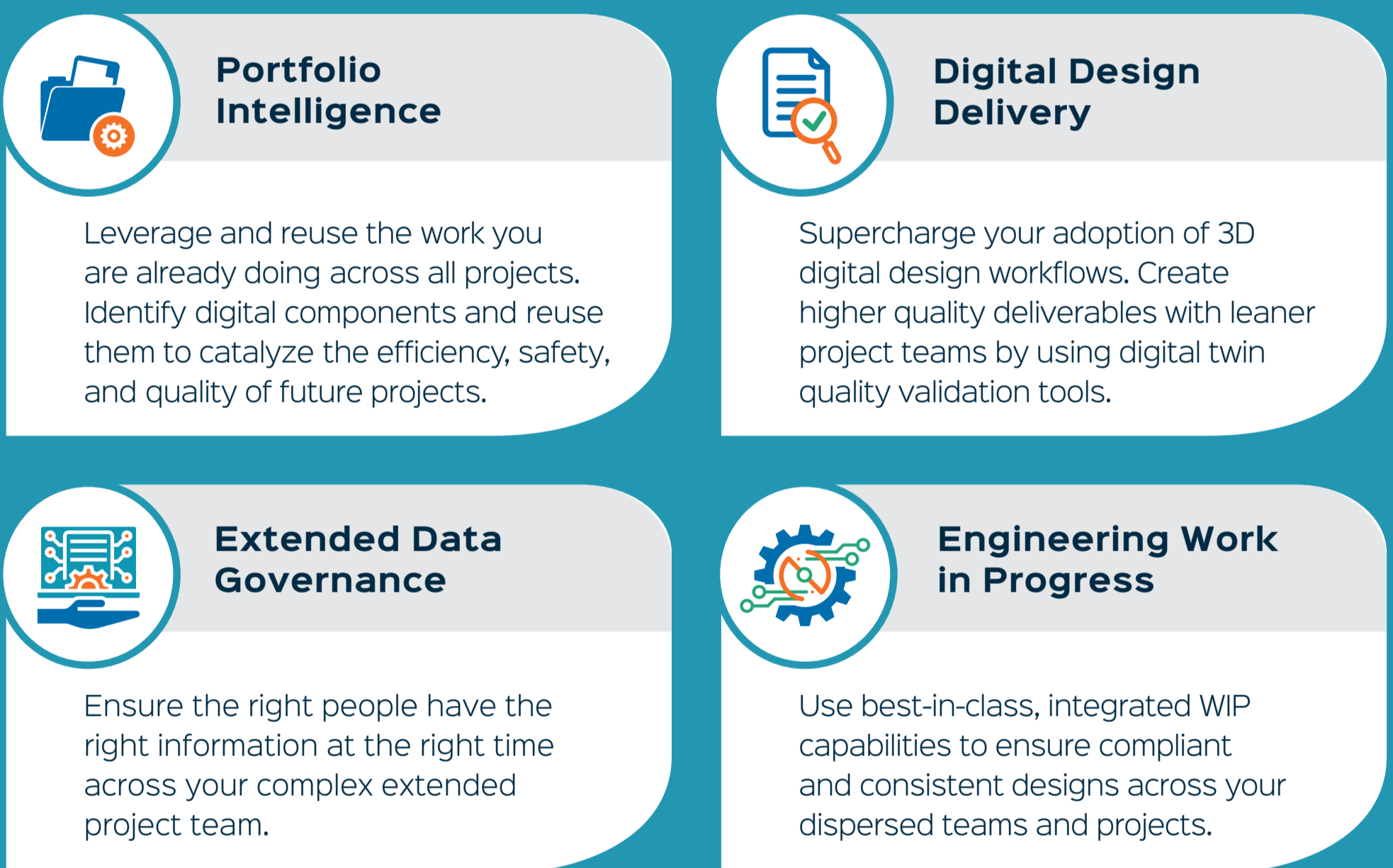
Learn how ProjectWise, powered by iTwin, is helping people like you meet the challenge.

You don't need to start over...

We heard you. We are introducing additions to ProjectWise to help you easily deal with these complexities. From product enhancements to success services to simplified pricing and packaging, we are making it easy to have the right tool at the right cost.

Like other leading engineering firms, you will move beyond using ProjectWise as a project delivery workhorse to a source of powerful data intelligence used across all projects. You don't have to start over. Build on the work you are already doing. We are here to help you.

Here is how we are evolving:



Now ProjectWise meets the needs of everyone, from your CEO to your project team members.

Manage

For management and partners needing managed collaboration.

Engineer

For engineers and designers collaboratively creating infrastructure models.

Validate

For engineering leadership requiring the most advanced engineering validation and analysis capabilities.



Ready to get started? It is easy, and we can help.

ProjectWise features tiered enterprise offerings tailored to meet the unique needs of different sizes of infrastructure design firms.

To learn more about ProjectWise, visit <https://www.bentley.com/software/projectwise/>.